



# Option Modules

## Modbus TCP Communications Option

HA501937U001 Issue 1  
Technical Manual

aerospace  
climate control  
electromechanical  
filtration  
fluid & gas handling  
hydraulics  
pneumatics  
process control  
sealing & shielding



ENGINEERING YOUR SUCCESS



---

# AC30 Modbus TCP Option

## Technical Manual HA501937U001 Issue 1

Copyright 2013 Parker Hannifin Manufacturing Limited

All rights strictly reserved. No part of this document may be stored in a retrieval system, or transmitted in any form or by any means to persons not employed by a Parker company without written permission from Parker Hannifin Ltd. Although every effort has been taken to ensure the accuracy of this document it may be necessary, without notice, to make amendments or correct omissions. Parker cannot accept responsibility for damage, injury, or expenses resulting therefrom.

Parker Hannifin Manufacturing Limited is referred to throughout this document as Parker.

### **WARRANTY**

The general terms and conditions of sale of goods and/or services of Parker Hannifin Europe Sàrl's, Luxembourg, Switzerland Branch, Etoy, apply to this product unless otherwise agreed. The terms and conditions are available on our website [www.parker.com/termsandconditions/switzerland](http://www.parker.com/termsandconditions/switzerland).

**FAILURE OR IMPROPER SELECTION OR IMPROPER USE OF THE PRODUCTS DESCRIBED HEREIN OR RELATED ITEMS CAN CAUSE DEATH, PERSONAL INJURY AND PROPERTY DAMAGE.**

This document and other information from Parker-Hannifin Corporation, its subsidiaries and authorized distributors provide product or system options for further investigation by users having technical expertise.

The user, through its own analysis and testing, is solely responsible for making the final selection of the system and components and assuring that all performance, endurance, maintenance, safety and warning requirements of the application are met. The user must analyze all aspects of the application, follow applicable industry standards, and follow the information concerning the product in the current product catalog and in any other materials provided from Parker or its subsidiaries or authorized distributors.

To the extent that Parker or its subsidiaries or authorized distributors provide component or system options based upon data or specifications provided by the user, the user is responsible for determining that such data and specifications are suitable and sufficient for all applications and reasonably foreseeable uses of the components or systems.

The above disclaimer is being specifically brought to the user's attention and is in addition to and not in substitution to the Exclusions and Limitations on Liability which are set out in the terms and conditions of sale.

# Safety Information



## Requirements

**IMPORTANT:** Please read this information *BEFORE* installing the equipment.

### Intended Users

This manual is to be made available to all persons who are required to install, configure or service equipment described herein, or any other associated operation.

The information given is intended to highlight safety issues, EMC considerations, and to enable the user to obtain maximum benefit from the equipment.

Complete the following table for future reference detailing how the unit is to be installed and used.

INSTALLATION DETAILS	
<b>Model Number</b> <i>(see product label)</i>	
<b>Where installed</b> <i>(for your own information)</i>	

### Application Area

The equipment described is intended for industrial motor speed control utilising AC induction or AC synchronous machines.

### Personnel

Installation, operation and maintenance of the equipment should be carried out by competent personnel. A competent person is someone who is technically qualified and familiar with all safety information and established safety practices; with the installation process, operation and maintenance of this equipment; and with all the hazards involved.

### Product Warnings

 <b>DANGER</b> Risk of electric shock	 <b>WARNING</b> Hot surfaces	 <b>Caution</b> Refer to documentation	 <b>Earth/Ground</b> Protective Conductor Terminal
---	--	--	--

## CAUTION!

### APPLICATION RISK

- The specifications, processes and circuitry described herein are for guidance only and may need to be adapted to the user's specific application. We cannot guarantee the suitability of the equipment described in this Manual for individual applications.

### RISK ASSESSMENT

Under fault conditions, power loss or unintended operating conditions, the drive may not operate as intended. In particular:

- Stored energy might not discharge to safe levels as quickly as suggested, and can still be present even though the drive appears to be switched off
- The motor's direction of rotation might not be controlled
- The motor speed might not be controlled
- The motor might be energised

A drive is a component within a drive system that may influence its operation or effects under a fault condition. Consideration must be given to:

- Stored energy
- Supply disconnects
- Sequencing logic
- Unintended operation

## Safety Information



### **DANGER! - Ignoring the following may result in injury**

1. This equipment can endanger life by exposure to rotating machinery and high voltages.
2. The equipment must be permanently earthed due to the high earth leakage current, and the drive motor must be connected to an appropriate safety earth.
3. Ensure all incoming supplies are isolated before working on the equipment. Be aware that there may be more than one supply connection to the drive.
4. There may still be dangerous voltages present at power terminals (motor output, supply input phases, DC bus and the brake, where fitted) when the motor is at standstill or is stopped.
5. For measurements use only a meter to IEC 61010 (CAT III or higher). Always begin using the highest range. CAT I and CAT II meters must not be used on this product.
6. Allow at least 5 minutes for the drive's capacitors to discharge to safe voltage levels (<50V). Use the specified meter capable of measuring up to 1000V dc & ac rms to confirm that less than 50V is present between all power terminals and between power terminals and earth.
7. Unless otherwise stated, this product must NOT be dismantled. In the event of a fault the drive must be returned. Refer to "Routine Maintenance and Repair".

### **WARNING! - Ignoring the following may result in injury or damage to equipment**

#### **SAFETY**

**Where there is conflict between EMC and Safety requirements, personnel safety shall always take precedence.**

- Never perform high voltage resistance checks on the wiring without first disconnecting the drive from the circuit being tested.
- Whilst ensuring ventilation is sufficient, provide guarding and /or additional safety systems to prevent injury or damage to equipment.
- When replacing a drive in an application and before returning to use, it is essential that all user defined parameters for the product's operation are correctly installed.
- All control and signal terminals are SELV, i.e. protected by double insulation. Ensure all external wiring is rated for the highest system voltage.
- Thermal sensors contained within the motor must have at least basic insulation.
- All exposed metalwork in the Inverter is protected by basic insulation and bonded to a safety earth.
- RCDs are not recommended for use with this product but, where their use is mandatory, only Type B RCDs should be used.

#### **EMC**

- In a domestic environment this product may cause radio interference in which case supplementary mitigation measures may be required.
- This equipment contains electrostatic discharge (ESD) sensitive parts. Observe static control precautions when handling, installing and servicing this product.
- This is a product of the restricted sales distribution class according to IEC 61800-3. It is designated as "professional equipment" as defined in EN61000-3-2. Permission of the supply authority shall be obtained before connection to the low voltage supply.

# Disposal

## Waste Electrical and Electronic Equipment (WEEE)



Waste Electrical and Electronic Equipment - must not be disposed of with domestic waste.

It must be separately collected according to local legislation and applicable laws.

Parker Hannifin Company, together with local distributors and in accordance with EU directive 2002/96/EC, undertakes to withdraw and dispose of its products, fully respecting environmental considerations.

For more information about how to recycle your Parker supplied waste equipment, please contact your local Parker Service Centre.

### ***Packaging***

During transport our products are protected by suitable packaging. This is entirely environmentally compatible and should be taken for central disposal as secondary raw material

Contents.....	Page No.
<b>AC30 Modbus TCP Option .....</b>	<b>1</b>
Introduction .....	1
Features .....	1
The Product Code .....	1
Installation.....	2
Connecting to the Modbus TCP Network.....	4
Cable Type .....	4
LEDs.....	5
Network Status (NS) LED .....	5
Module Status (MS) LED .....	5
Link/Activity LED.....	5
Configuration.....	6
Address .....	6
Process Active Timeout .....	6
Word Order.....	6
Process Data .....	7
Modbus Register Mapping .....	8
Modbus Mapped Communication Settings .....	9
Supported Modbus Functions .....	9
Example Configuration .....	10
Configuration Summary .....	10
Example Using TS8000 HMI.....	11
Configuring the AC30.....	17
Acyclic Data Exchange.....	20
Overview.....	20
Arrays .....	20
Strings .....	20
Example Acyclic String Access .....	21
Lost Communications Trip.....	23
Supervised Parameter .....	23
Comms Break Trip.....	23
Diagnostic Event.....	24
Ethernet .....	25
Web Server.....	25
FTP Server .....	27
Parameters .....	28
Configuration Parameters .....	28
Runtime Parameters .....	33
Diagnostic Parameters.....	34

Troubleshooting .....	40
Hardware Mismatch .....	40
Invalid Configuration .....	40
Modbus Exceptions .....	40
Register Writing .....	40
Appendix A – Array Parameter Numbers .....	41
Array Example .....	41
Appendix B – String Parameter Numbers .....	42
String Example .....	42
String Array Example .....	43
Appendix C – Data Types .....	44



# AC30 MODBUS TCP OPTION

## Introduction

---

### Features

- Modbus TCP server
- 10/100Mbit, full/half duplex
- Galvanically isolated 2-port Ethernet interface
- Up to 4 simultaneous connections
- Network Status and Module Status LEDs
- Up to 256 bytes of process I/O data in each direction
- Acyclic access of parameters
- Web server
- FTP server

## The Product Code

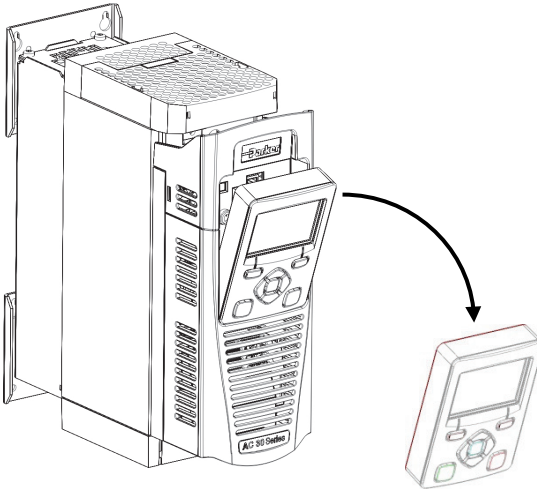
---

The product code for the Modbus TCP Option is:

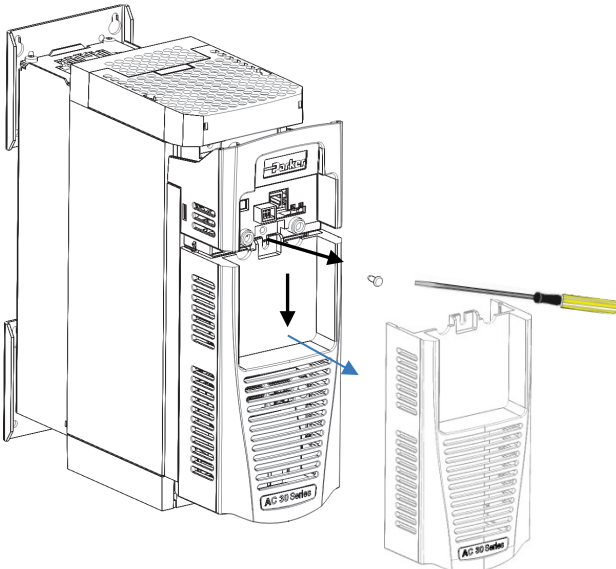
7003-IM-00

## Installation

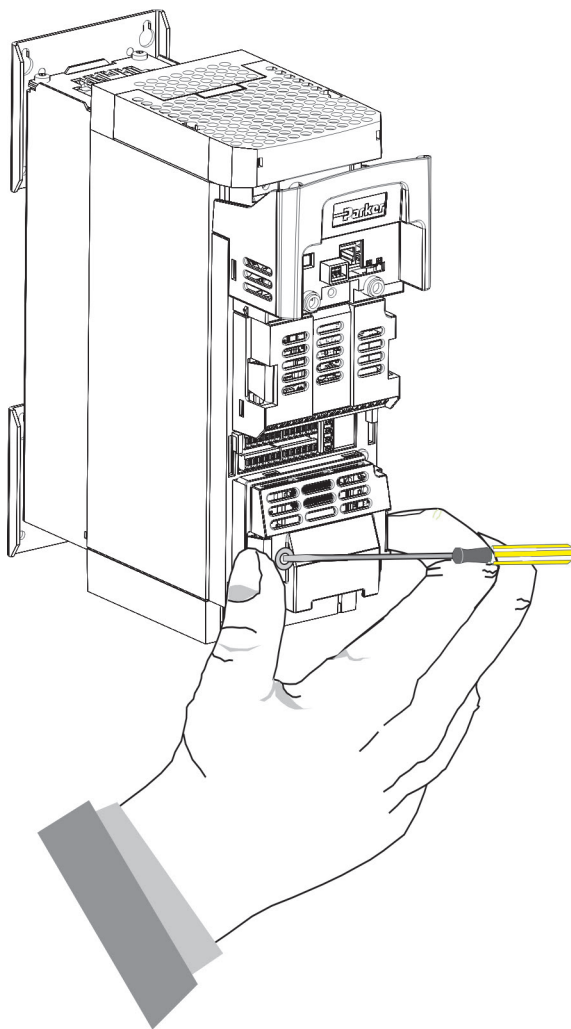
1. Remove the Graphical Keypad (GKP) by pulling from the top down, and remove.



2. After removing the screw slide the control module lower cover down slightly and then remove.

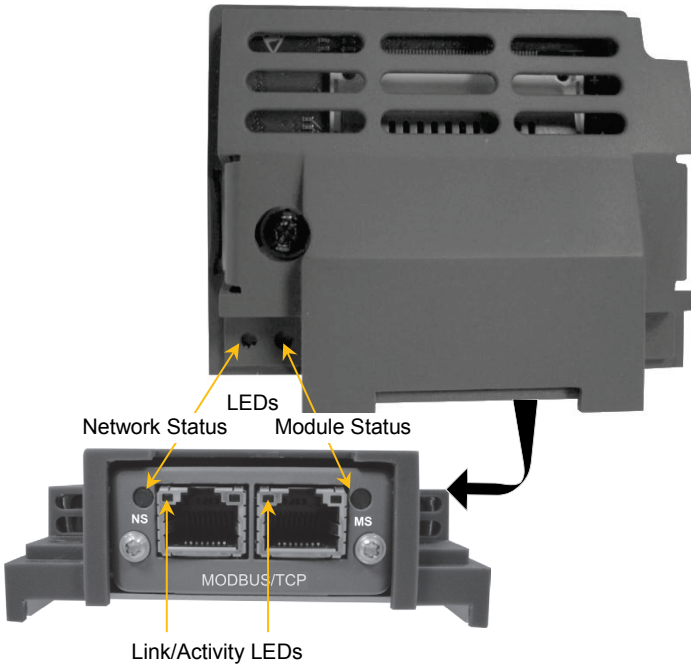


3. Click the Option into place and tighten the retaining screw, as shown.



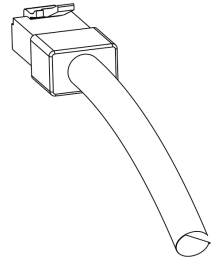
4. Slide and click back the control module lower cover, tighten the retaining screw and slot back the GKP.

## Connecting to the Modbus TCP Network



Two RJ45 Ethernet sockets are provided. Either or both sockets may be used. Having 2 ports reduces the need for additional Ethernet switches. The network *should not* be configured in a ring.

The socket shields are connected to protective earth via a filter.



### Cable Type

CAT5E or CAT6 cable up to 100m between nodes with both RJ45 plugs wired in the same TIA/EIA-468A or B scheme.

## LEDs

---

### Network Status (NS) LED

State	Indication
Off	No power or no IP address
Green	Module is in Process Active or Idle state
Green, flashing	Waiting for connections
Red	Duplicate IP address or fatal event
Red, flashing	Process Active Timeout

### Module Status (MS) LED

State	Indication
Off	No power
Green	Normal operation
Red	Major fault (EXCEPTION state or fatal event)
Red, flashing	Minor fault (diagnostic event) or IP conflict

### Link/Activity LED

State	Indication
Off	No link, no activity
Green	Link established, 100Mbit/s
Green, flickering	Activity, 100Mbit/s
Yellow	Link established, 10Mbit/s
Yellow, flickering	Activity, 10Mbit/s

## Configuration

---

The option requires configuration of the address, word order and mapping of the process data. Optionally, a process active timeout may be set. Note that some communication parameters only become active after the AC30 leaves the configuration state.

The **0044 Comms Required** parameter must be set to **MODBUS TCP**.

### Address

There are three methods to set the IP address, subnet mask and gateway address of the device: the slave sets its own address, the address is set externally or the address is set by a DHCP server. The parameter **0199 Address Assignment** is used to choose the method.

If the IP address is set by the slave (**Address Assignment = FIXED**) then three further parameters must be set. These are:

**0200 Fixed IP Address**

**0201 Fixed Subnet Mask**

**0202 Fixed Gateway Address**

### Process Active Timeout

The **0236 Modbus TCP Timeout** parameter specifies how long the option shall stay in the PROCESS ACTIVE state after receiving a Modbus request.

If this is set to zero, then the option will remain in the PROCESS ACTIVE state after receiving the first Modbus request.

### Word Order

The **0235 High Word First TCP** parameter specifies the network word order of 32-bit parameters. If set TRUE then the high word (most significant word) will be sent first.

## Process Data

Although Modbus is acyclic by nature, the communication option allows for process data exchange. This allows a selection of parameters to be grouped together for fast I/O data exchange.

The cyclic I/O data is configured by using the read and write process data mapping tables in the AC30. These tables are two parameter arrays in which AC30 parameter numbers may be added.

String-type parameters may not be mapped.

### ***Read Mapping***

The read process data represents cyclic data sent from the master to the AC30. Only writable AC30 parameters, that are not configuration parameters, may be added to the read process data.

When the Modbus option first becomes operational, the read process data area will be pre-loaded once with data by reading the associated mapped AC30 parameter values.

### ***Write Mapping***

The write process data represents cyclic data sent from the AC30 to the master.

### ***Mapping Arrays***

Parameter arrays may be added into the process data, however this could lead to large amounts of data being passed across the communications. An alternative is to only reference the element(s) of the array required. This is possible as each element of a parameter array has its own parameter number. See Appendix A – Array Parameter Numbers.

### ***Default Mapping***

The process data mapping will contain a factory default mapping. The default mapping may be overwritten if required.

### ***Process Data Exchange***

Process data exchange will occur when a connection is established. The module will enter the PROCESS ACTIVE state on the first received Modbus request (including acyclic access). It will stay in this state unless a timeout occurs (if specified).

However, the read process data will only update the mapped parameters when in the PROCESS ACTIVE mode.

On transition into the PROCESS ACTIVE state all read process mapped parameters will be updated.

When in the PROCESS ACTIVE state the read process mapped parameters will all update only when a change in the read process data occurs.

## Modbus Register Mapping

The Process Data is mapped to Modbus registers. The read process data is mapped to the Holding Registers, Input Registers and Coils. The write process data is mapped to the Input Registers and Discrete Inputs. The mapping is summarised below.

Read Process Data Mapping	
Range	
00001 - 00256	4x Holding Registers
00001 - 04096	0x Coils

Write Process Data Mapping	
Range	
00257 – 00512	4x Holding Registers
00001 - 00256	3x Input Registers
00001 - 04096	1x Discrete Inputs

Each mapped AC30 parameters will map to at least one register. A parameter having a data size of 1 byte will map to the low byte of a Modbus register. The unused byte, if read, will return zero. Writing to it will have no effect. The data size of the AC30 parameter types is given in Appendix C – Data Types.

Multi-element AC30 parameter (arrays), however, will be packed into the register mapping. An example mapping is shown below, mixing single-element and multi-element parameters.

Process Data Mapping		Modbus Register Mapping		
Parameter	Data Type	Register	High Byte	Low Byte
1	USINT	00001		USINT
2	SINT	00002		SINT
3	INT	00003	INT	
4	BOOL	00004		b 0
5	DINT	00005 00006	DINT	
6	BOOL[3]	00007		b <sub>2</sub>   b <sub>1</sub>   b <sub>0</sub>
7	SINT[3]	00008 00009	SINT[1]	SINT[0] SINT[3]



The process data may also be accessed on a bit by bit basis (Coils and Discrete Inputs). For example, reading Discrete Inputs 00001 to 00016 will return the same data as reading Input Register 00001.

## Modbus Mapped Communication Settings

Communications settings are also mapped onto the Holding Registers.

The mapping is summarised below.

Holding Register		
Register	Contents	Comment
00513	(Reserved)	-
00514	(Reserved)	-
00515	(Reserved)	-
00516	Process Active Timeout	Process Active Timeout in milliseconds
00517	Enter/Exit Idle Mode	0: Not idle >0 Idle - the Modbus option will change to the IDLE state.

## Supported Modbus Functions

The following Modbus functions are supported on the AC30 option.

Function #	Modbus Function
1	Read Coils
2	Read Discrete Inputs
3	Read Holding Registers
4	Read Input Registers
5	Write Single Coil
6	Write Single Register
15	Write Multiple Coils
16	Write Multiple Registers
23	Read/Write Multiple Registers
43	Read Device Identification (Subcode 14)

## Example Configuration

### Configuration Summary

Communications Settings	
IP Address, Subnet Mask, Gateway Address	
Word Order	High Word First
Process Active Timeout	1000 ms

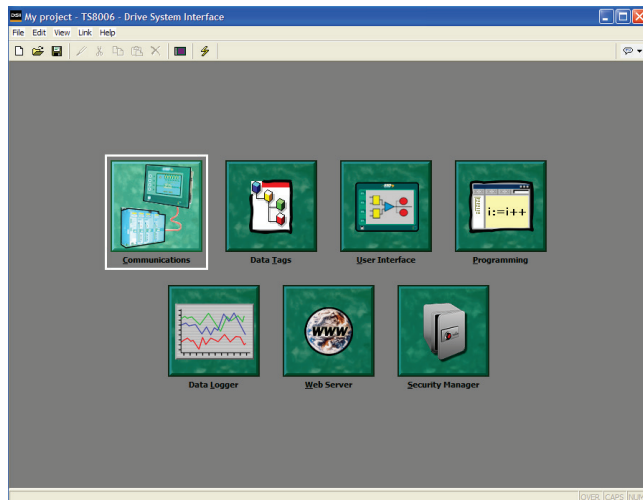
Read Process Mapping Table		Data Type	Bytes	Holding Register
000	<b>0627 Comms Control Word</b>	WORD	2	00001
001	<b>0681 Comms Reference</b>	REAL	4	00002 – 00003
002	000			
003	000			

Write Process Mapping Table		Data Type	Bytes	Input Register
000	<b>0661 Status Word</b>	WORD	2	00001
001	<b>0395 Actual Speed Percent</b>	REAL	4	00002 – 00003
002	000			
003	000			

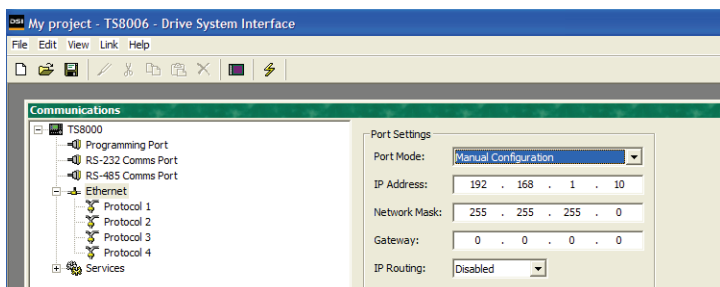
## Example Using TS8000 HMI

Prior knowledge of the TS8000 HMI and DSI8000 Software is assumed.

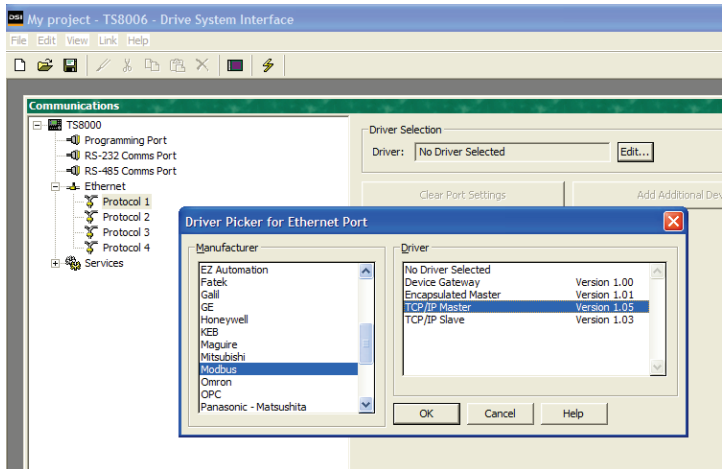
1. Create a new project.  
Start the DSI8000 software and click on File and New.
2. Setup the Port Communication Settings.



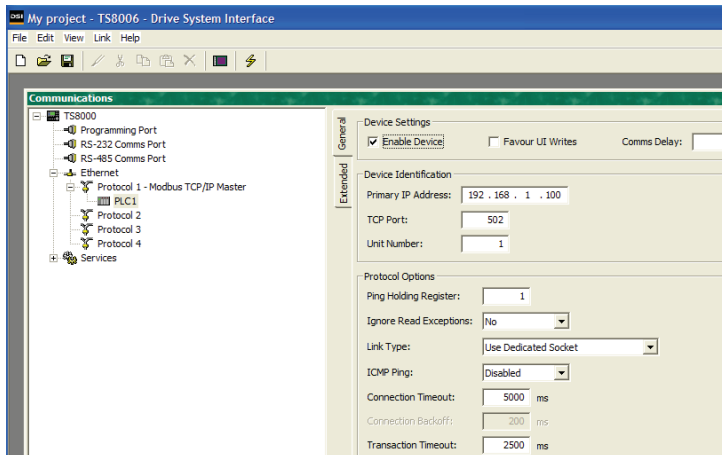
Double-click on the **Communications** tab.



Under **TS8000** highlight **Ethernet**, and under **Port Settings** change the **Port Mode** to **Manual Configuration**. Enter the required IP Address, Network Mask and Gateway for the TS8000.



Highlight **Protocol 1**, and under **Driver Selection** and **Driver** click on **Edit...** Select the **Manufacturer** to be **Modbus** and the **Driver** to be **TCP/IP Master**.



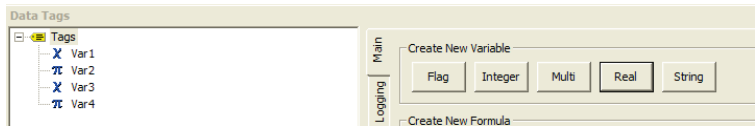
Highlight **PLC1** which is created under **Protocol 1**. The slave IP address is set under the **Device Identification** section.

Set the **Ping Holding Register** under the **Protocol Options**. This will be used by the TS8000 to detect the slave device by a read request of this register. Any valid register may be used. By default this is set to register 1.

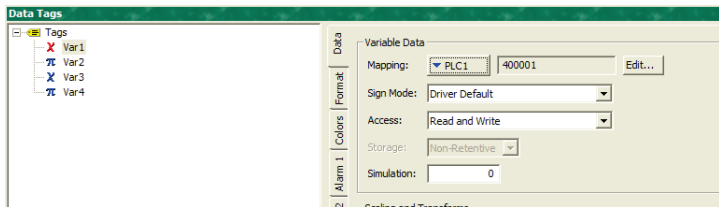
After completing the communications setup close the Communications window.

### 3. Create the Data Tags

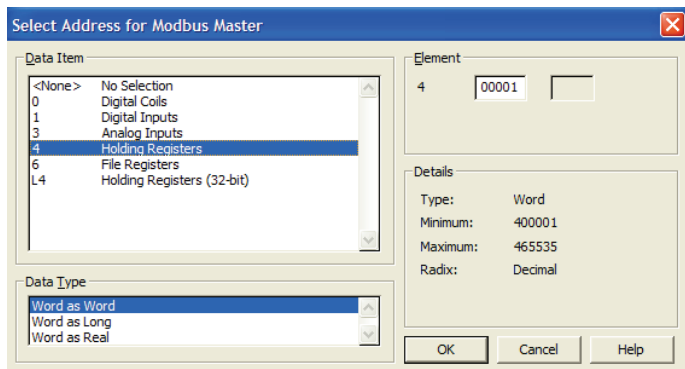
Double-click on the **Data Tags** tab.



Under **Create New Variable** click on **Integer**, then **Real**, then **Integer**, then **Real**. This will create four new parameters to represent the four parameters mapped to the process data:



To configure tag **Var1**, highlight the tag. On the **Data** tab under mapping select PLC1.



In the popup window set:

**Data Item** as **Holding Registers**

**Data Type** as **Word as Word**

**Element** as **00001**

Click OK.

Still on the **Data** tab, make sure **Access** is set to **Read and Write**.

Click on the **Format** tag.

The screenshot shows a configuration window with a sidebar on the left containing tabs: Data, Format, Colors, Alarm 1, Alarm 2, Triggers, Security, and Comment. The 'Format' tab is active. The 'Data Label' section has a 'Label Text' field with 'Comms Control Word' and a 'Translate...' button. The 'Data Limits' section has 'Minimum Value' and 'Maximum Value' fields, both with a 'General' dropdown and 'As Per Format' text, and 'Edit...' buttons. The 'Data Format' section includes 'Number Base' (Hexadecimal), 'Sign Mode' (Unsigned), 'Digits Before DP' (4), 'Digits After DP' (0), 'Leading Zeros' (Yes), and 'Group Digits' (No). There are 'Prefix' and 'Suffix' fields, both set to 'None', with 'Translate...' buttons. The 'Examples' section at the bottom shows 'Positive shown as "ABCD"' and 'Negative shown as "ABCD"'. The window has a light beige background.

The **Label Text** may be changed from **Var1** if required. Set the **Data Format** to **Hexadecimal**.

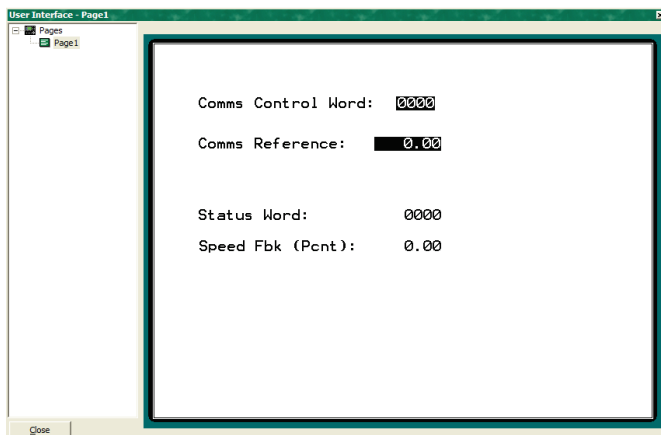
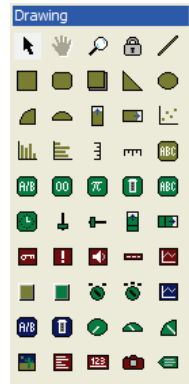
Configure the remaining tags in a similar way as summarised below:

TS8000	Tag	Var1	Var2	Var3	Var4
	<b>Access</b>	Read/ Write	Read/ Write	Read Only	Read Only
	<b>Register</b>	Holding (4)00001	Holding (4)00002	Input (3)00001	Input (3)00002
	<b>Type</b>	Word as Word	Word as Real	Word as Word	Word as Real
	<b>Format</b>	Hexadecimal	Soft Sign 2 digits after DP	Hexadecimal	Soft Sign 2 digits after DP
<b>AC30</b>	<b>Process Data</b>	<b>0627 Comms Control WORD</b>	<b>0681 Comms Reference</b>	<b>0661 Status Word</b>	<b>0395 Actual Speed Percent</b>
	<b>Type</b>	WORD	REAL	WORD	REAL
	<b>Bytes</b>	2	4	2	4

4. Configure the display.

Double-click on the **User Interface** tab.

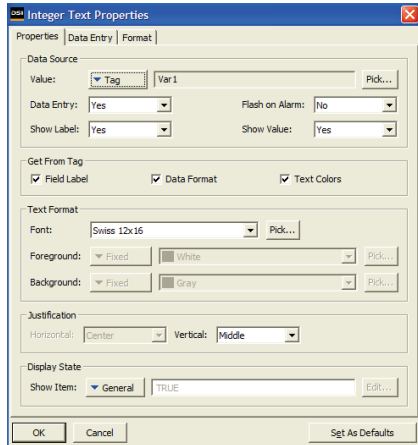
From the drawing windows click on the **Integer Text** symbol.



Next create the image text by click and dragging on the User Interface window. Double click on the created box to bring up a properties window.

From the **Data Source**, select **Tag** from the pull-down **Value** menu, then select **Var1**.

As Var1 is a writable parameter select **Yes** for **Data Entry**.



Repeat for Var2, Var3 and Var4. As Var2 and Var4 are Real types then choose the **Real Text** symbol from the Drawing menu.



When the User Interface has been configured click on Close.

##### 5. Update the TS8000 with the Configuration.

First select from the main menu **Link** and **Options**. Choose the programming port you are using to connect the TS8000 to the PC.


Next select **Link** followed by **Update...** to load the configuration.



## Configuring the AC30


### AC30 Parker Drive Quicktool (PDQ)

When performing an online configuration, the fitted option card will automatically be selected. In offline mode, parameter **0044 Comms Required** must be set to **Modbus TCP**.

 Create a New Drive - Drive


Choose a Task | Drive | **Application** | Motor | Motor Control | Input/Output

---


(987) power stack	4.5A 400V
 Comms Required	MODBUS TCP
Range :	NONE
ID : 44	CANOPEN
The required communications option type.	CONTROLNET
(1178) IO Option Type	DEVICENET
(961) Drive Name	ETHERCAT
	ETHERNET IP
	MODBUS RTU
	<b>MODBUS TCP</b>
	PROFIBUS DPV1
	PROFINET IO

In the Application tab, the following settings are available in the Communications block.

Select the method to set the IP address, subnet mask and gateway address using the **0199 Address Assignment** parameter:

 Address Assignment	FIXED
Range :	
Sets method for setting IP address	

If this parameter is set to FIXED then the parameters **0200 Fixed IP Address**, **0201 Fixed Subnet Mask**, **0202 Fixed Gateway Address** must be set:

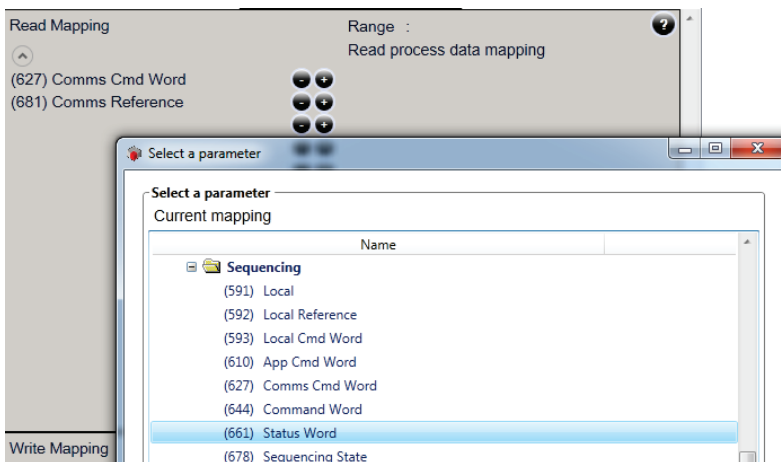
 Fixed IP Address	192.168.1.0
Range :	
Required IP Address	
Fixed Subnet Mask	0
Fixed Gateway Address	0

Set the **0235 High Word First TCP** and **0236 Modbus TCP Timeout** parameters to the required values.

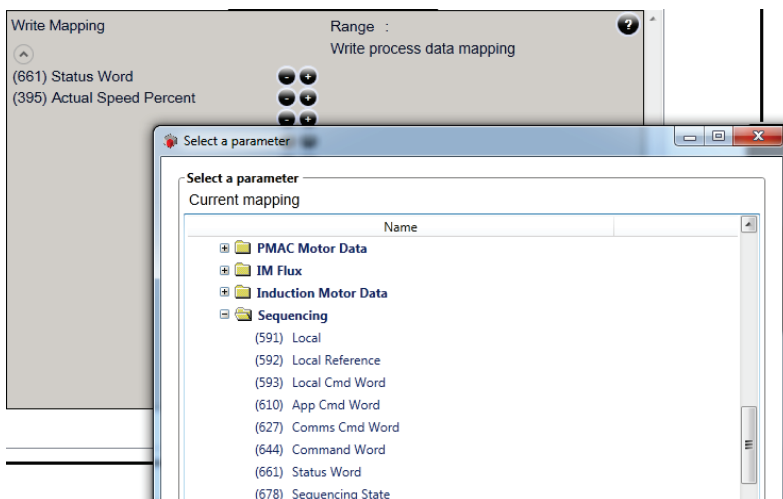
Option Fieldbus

(44) Comms Required	MODBUS TCP
(235) High Word First TCP	True
Modbus TCP Timeout	<input type="text" value="1s"/>
Range : t#0s ---> t#65s	
ID : 236	
The required Modbus TCP communication option process active timeout.	

Add the required parameters to the Read Process Mapping table (parameter **0055 Read Mapping**) by selecting them from the popup window:



Add the required parameters to the Write Process Mapping table (parameter **0120 Write Mapping**) by selecting them from the popup window:



*Note the Process Data mapping ends on the first empty entry.*

## Acyclic Data Exchange

---

AC30 parameters may be accessed acyclically across the network.

### Overview

The AC30 parameters are mapped to **Holding Registers** starting at register address 0529.

Each parameter number is mapped on to two registers regardless of the parameter data type.

If the parameter has a data type that uses one byte then it will occupy the low-byte of the first register. If the parameter has a data type that uses two bytes then it will occupy the first register. Unused register locations will read zero; writing to that location will have no effect.

The word-order of 32-bit parameters is determined by the **0235 High Word First TCP** parameter.

The data size of the AC30 parameter types is given in Appendix C – Data Types.

The relationship between an AC30 parameter and a Holding Register (assuming the Modbus registers of the client start at 0001) is given as:

$$\text{Register number} = (\text{parameter number} - 1) * 2 + 0529$$

### Arrays

Access to AC30 parameter arrays is achieved through individual element parameter numbers, as described in Appendix A – Array Parameter Numbers.

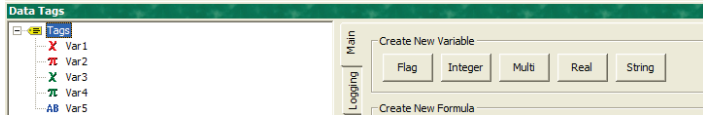
It is not recommended to access the array through the parameter number that represents the whole array. This will only access the first four bytes of the array.

### Strings

String parameters have a parameter number that represents the whole string. This parameter number is mapped to two registers so limits access to the first four characters. Additional contiguous parameter numbers are set aside so that the whole string can be accessed: one additional parameter number for each four characters. Characters are packed low-to-high in the registers. This is described in Appendix B – String Parameter Numbers.

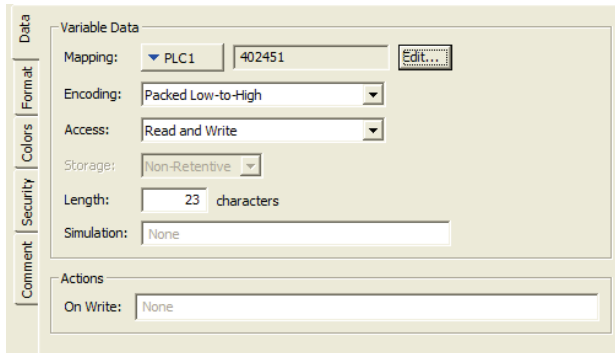
## Example Acyclic String Access

Using the TS8000 HMI has been described in the Example Configuration section, and will be extended here to include acyclic string access.



Click on the **Data Tags** tab and click on **String** under **Create New Variable** in this case **Var5**.

The Var5 tag will be mapped to the **0961 Drive Name** parameter. This is a string of size **23** characters. The parameter number that represents the start of the *complete* string will be **0962**. This equates to a Modbus register number of **02451**.



Click on the **Var5** tag and set **Mapping** to **PLC1**. Click on **Edit...** and in the popup window set:

**Data Item** to **Holding Registers**

**Element** to **02451**

**Data Type** to **Word as Word**

Also set:

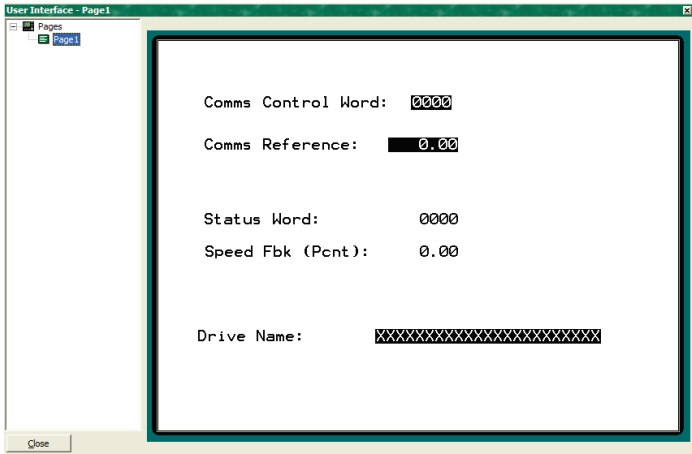
**Encoding** to **Packed Low-to-High**

**Access** to **Read and Write**.

**Length** to **23**

Under the **Format** tag set the **Field Width** to **23**.

Configure the display as described in Part 6 of the Example Using TS8000 HMI, except a string parameter is to be added. For that click on the **String Text** symbol in the **Drawing** window.



## Lost Communications Trip

---

### Supervised Parameter

The parameter **0047 Comms Supervised** indicates that the Modbus network participation is supervised by another Modbus device.

The Supervised parameter value is set to TRUE when the option is in the PROCESS ACTIVE or IDLE state *and* the parameter **0236 Modbus TCP Timeout** is set a value other than zero.

The Supervised parameter will subsequently change to FALSE if the module changes from the PROCESS ACTIVE or IDLE state.

### Comms Break Trip

The Comms Break trip will generate a trip if a break in communications is detected. A trip event will be generated when a transition from TRUE to FALSE of the parameter **0047 Comms Supervised** occurs.

To enable the Comms Break trip, the parameter **0048 Comms Trip Enable** must be set to TRUE *and* the **COMMS BREAK** bit set in the parameter **0697 Enable 1-32**. The parameter **0236 Modbus TCP Timeout** must be set to a value other than zero.

For more information on enabling trips see Chapter 10 Trips & Fault Finding in the AC30 Product Manual HA501718U001.

## Diagnostic Event

A single diagnostic event may be created. The diagnostic is represented on the network as a dedicated entry in the Modbus Input register **00258**. The severity is fixed as Minor Recoverable.

The number of diagnostic events active can be found in the Modbus Input register **00257**. This will be either 0 or 1.

A summary of the Modbus Input registers used for the diagnostic events is given below:

Input Register	Contents	Comment
00257	Diagnostic Event Count	Number of active diagnostic events
00258	Diagnostic Event #1	High byte = Severity (Minor recoverable = 0) Low byte = Event code
00259	Diagnostic Event #2	Unsupported
00260	Diagnostic Event #3	
00261	Diagnostic Event #4	
00262	Diagnostic Event #5	
00263	Diagnostic Event #6	

Four AC30 parameters are associated with the diagnostic event:

### 0185 Comms Event Code

This code will be entered into the Diagnostic Event #1 Input register when the diagnostic become active.

### 0187 Comms Event Set

A rising edge signal from FALSE to TRUE will create a diagnostic event. The **Comms Event Clear** parameter must be set FALSE.

### 0188 Comms Event Clear

A rising edge signal from FALSE to TRUE will remove a diagnostic event. The **Comms Event Set** parameter must be set to FALSE.

### 0186 Comms Event Active

This parameter indicates if a diagnostic event is active or not.

*Note: The rising edge signals for Comms Event Set and Comms Event Clear must be held for at least 10ms in FALSE and at least 10ms in TRUE to take effect.*

When a diagnostic event is active the Module Status LED will flash red.



## Ethernet

### Web Server

The option has a built-in web server enabling some configuration and diagnostics for the option.

To enable the web server the parameter **0203 Option Web Enable** must be set to TRUE. The web pages may be accessed by a web browser by entering the IP address of the option.

A number of built-in pages are available. The main index page provides a link to the Network Interface pages and the Parameter Data pages.

#### Network Interface Pages

The Network Interface page provides basic information about the option.

<b>Anybus-CC Modbus-TCP (2-Port)</b>	
Network interface	
Serial#:	0xA0160043
MAC ID:	00:30:11:06:71:8D
Firmware version:	1.00 Build 4
Uptime:	0 days, 0h 0m 43s
CPU load:	5%

[▶ Main](#)   [▶ Network configuration](#)  
[▶ Network statistics](#)

The Network Configuration page allows TCP/IP settings to be changed. The Host name can also be set here. This will be used if DHCP is enabled.

The Network Statics page provides information about the Ethernet ports and communications statistics.

#### Parameter Data Pages

The Parameter Data pages allow access to some AC30 parameters. To enable access to this page the parameter **0204 Web Parameters Enable** must be set to TRUE.

**Anybus-CC Modbus-TCP (2-Port)**

**Parameter data**

Number of parameters per page: 5

#	Parameter	Value	
1	0627: Comms Control Word	0	<input type="button" value="Set"/>
2	0681: Comms Reference	0.000000	<input type="button" value="Set"/>
3	0661: Status Word	33	
4	0395: Actual Speed Percent	0.000000	
5	1900: Selected Application	BASIC SPEED CONTROL	<input type="button" value="Set"/>

1-5
6-10
11-15
16-20
Next >>  
21-25
26-30
31-35
36-40  
41-43

[▶ Main](#)

The parameter page lists the mapped process data parameters and any soft parameters that have been defined. The Parameter column contains the parameter number followed by its name.

### Authorization

Directories can be protected from web access by placing a file called 'web\_accs.cfg' in the directory to protect (see the FTP Server section). All the built-in web files are virtual files and are located in the root directory.

The file shall contain a list of users that are allowed to access the directory and its subdirectories.

File format:

```
Username1:Password1
Username2:Password2
...
UsernameN:PasswordN
```

→ List of approved users

```
[AutName]
(message goes here)
```

→ Optional login message

## FTP Server

The option has a built-in FTP server enabling access to the FLASH-based file system which hosts 2MByte of non-volatile storage.

To enable the FTP server the parameter **0205 Option FTP Enable** must be set to TRUE. To access the file system an FTP client is required such as Windows Explorer. Enter the IP address in to the address bar, for example ftp://192.168.1.57

By default no files are stored on the file system (the built-in web files are virtual files).

### ***User Accounts***

User accounts are stored in the configuration file '\ftp.cfg'. This file holds the usernames, passwords and home directory for all users. Usernames and password must not exceed 15 characters in length. Users are not able to access files outside of their home directory.

File format:

```
Username1:Password1:Homedir1  
Username2:Password2:Homedir2  
...  
UsernameN:PasswordN:HomedirN
```

If there is no '\ftp.cfg' file or if the parameter **0206 Option FTP Admin Mode** parameter is set to TRUE then there will be unrestricted access to the file system.

## Parameters

### Configuration Parameters

0044 Comms Required		Range	RW	Saved	Config
Type	UINT (enumerated)	(1) NONE	✓	✓	✓
Default	NONE	(2) BACNET IP			
Communications option parameter.  Sets the required communications option.		(3) BACNET MSTP			
		(4) CANOPEN			
		(5) CC LINK			
		(6) CONTROLNET			
		(7) DEVICENET			
		(8) ETHERCAT			
		(9) ETHERNET IP			
		(10) MODBUS RTU			
		(11) MODBUS TCP			
		(12) PROFIBUS DPV1			
		(13) PROFINET IO			

0199 Address Assignment		Range	RW	Saved	Config
Type	USINT (enumerated)	(0) SLAVE SETS ADDRESS	✓	✓	✓
Default	SLAVE SETS ADDRESS	(1) EXTERNAL			
Communications option parameter.  Sets the method for setting the IP address, subnet mask and gateway address.		(2) DHCP			

0200 Fixed IP Address		Range	RW	Saved	Config
Type	DWORD (IP address)	0.0.0.0	✓	✓	✓
Default	0.0.0.0	...			
Communications option parameter.  IP address to be set by the slave. The parameter <b>Address Assignment</b> must be set to SLAVE SETS ADDRESS for this parameter to take effect.		255.255.255.255			

0201 Fixed Subnet Mask		Range	RW	Saved	Config
Type	DWORD (IP address)	0.0.0.0	✓	✓	✓
Default	0.0.0.0	...			
Communications option parameter.  Subnet mask to be set by the slave. The parameter <b>Address Assignment</b> must be set to SLAVE SETS ADDRESS for this parameter to take effect.		255.255.255.255			

0202 Fixed Gateway Address		Range	RW	Saved	Config
Type	DWORD (IP address)	0.0.0.0	✓	✓	✓
Default	0.0.0.0	...			
Communications option parameter.  Gateway address to be set by the slave. The parameter <b>Address Assignment</b> must be set to SLAVE SETS ADDRESS for this parameter to take effect.		255.255.255.255			

0203 Option Web Enable		Range	RW	Saved	Config
Type	BOOL	FALSE	✓	✓	✓
Default	TRUE	TRUE			
Communications option parameter. Enable access to the option's web server.					

0204 Web Parameters Enable		Range	RW	Saved	Config
Type	BOOL	FALSE	✓	✓	✓
Default	TRUE	TRUE			
Communications option parameter. Allows access to the parameter page via the option's web server.					

0205 Option FTP Enable		Range	RW	Saved	Config
Type	BOOL	FALSE	✓	✓	✓
Default	TRUE	TRUE			
Communications option parameter. Allows access to the option's FTP server.					

0206 Option FTP Admin Mode		Range	RW	Saved	Config
Type	BOOL	FALSE	✓	✓	✓
Default	TRUE	TRUE			
Communications option parameter. Allows unrestricted access to the option's FTP server. The parameter <b>Option FTP Enable</b> must be set to TRUE to access the server.					

0207 IPConfig Enable		Range	RW	Saved	Config
Type	BOOL	FALSE TRUE	✓	✓	✓
Default	TRUE				
Communications option parameter.  Enables the option to be accessed via the IPConfig PC utility.					

0235 High Word First TCP		Range	RW	Saved	Config
Type	BOOL	FALSE TRUE	✓	✓	✓
Default	FALSE				
Modbus TCP communications option parameter.  If set to TRUE, the most significant word of a 32-bit parameters will be mapped to the first register, and the least significant word to the next register.					

0236 Modbus TCP Timeout		Range	RW	Saved	Config
Type	TIME	0 ... 65.0 seconds	✓	✓	✓
Default	3.0 seconds				
Modbus TCP communications option parameter.  Sets the process active timeout of the option. A value of zero disables the timeout.					

0055 Read Mapping		Range	RW	Saved	Config
Type	Array of UINT	0 ... Last parameter number	✓	✓	✓
Default	-				
<p>Communications option parameter.</p> <p>Sets the required read process data mapping.</p> <p>Each entry in the table represents the required parameter number.</p>					

0120 Write Mapping		Range	RW	Saved	Config
Type	Array of UINT	0 ... Last parameter number	✓	✓	✓
Default	-				
<p>Communications option parameter.</p> <p>Sets the required write process data mapping.</p> <p>Each entry in the table represents the required parameter number.</p>					

0048 Comms Trip Enable		Range	RW	Saved	Config
Type	BOOL	FALSE TRUE	✓	✓	✗
Default	TRUE				
<p>Communications option parameter.</p> <p>Enables the communications trip.</p>					



## Runtime Parameters

0185 Comms Event Code		Range	RW	Saved	Config
Type	BYTE	0x00 ... 0xFF	✓	x	x
Default	0				
Communications option parameter.  Sets the event code to be used when a diagnostic event is created.					

0187 Comms Event Set		Range	RW	Saved	Config
Type	BOOL	FALSE  TRUE	✓	x	x
Default	FALSE				
Communications option parameter.  A rising edge (FALSE to TRUE) will create a diagnostic event.					

0188 Comms Event Clear		Range	RW	Saved	Config
Type	BOOL	FALSE  TRUE	✓	x	x
Default	FALSE				
Communications option parameter.  A rising edge (FALSE to TRUE) will remove a diagnostic event.					

## Diagnostic Parameters

0045 Comms Fitted		Range
Type	USINT (enumerated)	(0) UNKNOWN
		(1) NONE
		(2) BACNET IP
		(3) BACNET MSTP
		(4) CANOPEN
		(5) CC LINK
		(6) CONTROLNET
		(7) DEVICENET
		(8) ETHERCAT
		(9) ETHERNET IP
		(10) MODBUS RTU
		(11) MODBUS TCP
		(12) PROFIBUS DPV1
		(13) PROFINET IO
Communications option parameter.  Indicates the communications option fitted.		

0046 Comms State		Range
Type	USINT (enumerated)	
Communications option parameter.		
Indicates the state of the communications option fitted.		
		(0) SETUP – setup in progress
		(1) NW INIT – network-related initialisation tasks are being performed
		(2) WAIT PROCESS – awaiting Modbus request
		(3) IDLE – this state is entered when the Holding Register 00517 has a value other than 0
		(4) PROCESS ACTIVE – a Modbus request addressed to this node has been received within the last Process Active Timeout period, or, if no timeout is specified, the module will stay in this state after the first received Modbus request.
		(5) ERROR – network error
		(6) RESERVED
		(7) EXCEPTION – unrecoverable error
		(8) NONE – option not fitted

0234 Modbus TCP State		Range
Type	USINT (enumerated)	
Modbus TCP communications option parameter.		
Indicates the state of the communications option fitted as the parameter <b>0046 Comms State</b> , but specifically for Modbus TCP.		
		(0) SETUP – setup in progress
		(1) NW INIT – network-related initialisation tasks are being performed
		(2) WAIT PROCESS – awaiting Modbus request
		(3) IDLE – this state is entered when the Holding Register 00517 has a value other than 0
		(4) PROCESS ACTIVE – a Modbus request addressed to this node has been received within the last Process Active Timeout period, or, if no timeout is specified, the module will stay in this state after the first received Modbus request.
		(5) ERROR – network error
		(6) RESERVED
		(7) EXCEPTION – unrecoverable error
		(8) NONE – option not fitted

0189 Option MAC Address		Range
Type	STRING	Null terminated string.
Communications option parameter. Indicates the Ethernet MAC address of the option.		

0195 Option IP Address		Range
Type	DWORD (IP address)	0.0.0.0 ... 255.255.255.255
Communications option parameter. Indicates the current IP address of the slave.		

0196 Option Subnet Mask		Range
Type	DWORD (IP address)	0.0.0.0 ... 255.255.255.255
Communications option parameter. Indicates the current subnet mask of the slave.		

0197 Option Gateway		Range
Type	DWORD (IP address)	0.0.0.0 ... 255.255.255.255
Communications option parameter. Indicates the gateway address of the slave		

0198 Option DHCP Enabled		Range
Type	BOOL	FALSE  TRUE
Communications option parameter.  Indicates if the DHCP client of the option is enabled.		

0047 Comms Supervised		Range
Type	BOOL	FALSE  TRUE
Communications option parameter.  Indicates that the Modbus network participation is supervised by another Modbus device. The Process Active Timeout must be set to a value other than 0.		

0049 Comms Module Version		Range
Type	DWORD	0x00000000  ... 0xFFFFFFFF  The most significant byte is the major version number, followed by the minor version number. The least significant byte is the build number.
Communications option parameter.  Firmware version of the option communications module.		

0050 Comms Module Serial		Range
Type	DWORD	0x00000000  ... 0xFFFFFFFF
Communications option parameter.  Serial number of the option communications module.		

0051 Comms Diagnostic		Range
Type	USINT (enumerated)	(0) NONE
		(1) HARDWARE MISMATCH – required communications option does not match that fitted, or no option fitted but one is required.
		(2) INVALID CONFIGURATION – the configuration of the option is not valid.
		(3) MAPPING FAILED – the process data mapping is not permitted, e.g. adding read-only parameters to the read process data mapping.
		(4) EXCEPTION – configuration error
		(5) UNSUPPORTED OPTION – the fitted option is not currently supported
<p>Communications option parameter.</p> <p>Indicates the state of the communications option fitted.</p>		

0052 Comms Diagnostic Code		Range
Type	DWORD	0x00000000
		...
		0xFFFFFFFF
<p>Communications option parameter.</p> <p>Diagnostic code associated with the Diagnostic parameter.</p>		

0053 Comms Exception		Range
Type	BYTE	0x00
		...
		0xFF
<p>Communications option parameter.</p> <p>Exception code associated with the Diagnostic parameter being in EXCEPTION</p>		

0054 Comms Net Exception		Range
Type	BYTE	0x00  ... 0xFF
<p>Communications option parameter.</p> <p>Network specific exception code associated with the Diagnostic parameter being in EXCEPTION</p>		

0186 Comms Event Active		Range
Type	BOOL	FALSE  TRUE
<p>Communications option parameter.</p> <p>Indicates a diagnostic event is active.</p>		

## Troubleshooting

---

Configuration problems can often be identified by looking at the Network Status and Module Status LEDs and from the Modbus TCP State and Comms Diagnostic parameters. Under normal operating conditions the Comms Diagnostic parameter should indicate NONE. Other values are summarized in the Diagnostic Parameters section.

### Hardware Mismatch

*Comms Diagnostic = HARDWARE MISMATCH*

- The required option does not match the actual fitted option.
- No option is fitted but one is required.

### Invalid Configuration

*Comms Diagnostic = INVALID CONFIGURATION*

- Invalid read or write process data mapping
- Invalid communication settings

*Comms Diagnostic = MAPPING FAILED*

- Attempting to map a parameter that does not exist.
- Attempting to map a configuration parameter.
- Attempting to map a string parameter.
- Attempting to map a read-only parameter to the read process data.

### Modbus Exceptions

*Comms Exception Codes*

- 01h - Illegal function
- 02h - Illegal data address
- 03h - Illegal data value

### Register Writing

*Writing to a 32-bit parameter acyclically fails*

- Both registers that make up a 32-bit parameter must be written together using a multiple write.



## Appendix A – Array Parameter Numbers

---

Some parameters have multiple elements and are classified as parameter arrays. A parameter array has a parameter number that accesses the *whole* of the array. It also has parameter numbers that represent each *element* of the array.

### Array Example

A parameter array called **My Array** has 4 elements.

Parameter Number	Parameter - My Array
0152	Whole array
0153	index 0
0154	index 1
0155	index 2
0156	index 3

If the parameter number of the whole array is 0152, then the parameter number of the element index 0 of the array will be 0153, the parameter number of the element index 1 will be 0154, etc.

Note that *string* array parameters access their elements via parameter numbers that are calculated in a different way.

## Appendix B – String Parameter Numbers

To enable access of string parameters over Modbus, in addition to the parameter number that represents the whole string, multiple contiguous parameter numbers are allocated so that the parameter can be broken down into multiple registers.

An additional parameter number is allocated for each four-character fragment of the string.

### String Example

A string parameter called **My String** has a string length of 12 characters (plus the null terminator). This will have one parameter number allocated for the whole string (in this example 0161) and 3 further parameter numbers for the string fragments (0162-0164).

If the value of the string is "0123456789AB":

Parameter Number	Represents	Register Number	Register Value	
			hi-byte	lo-byte
0161	whole string "0123456789AB"	00849	'1'	'0'
		00850	'3'	'2'
0162	fragment "0123"	00851	'1'	'0'
		00852	'3'	'2'
0163	fragment "4567"	00853	'5'	'4'
		00854	'7'	'6'
0164	fragment "89AB"	00855	'9'	'8'
		00856	'B'	'A'

As each AC30 parameter maps to two registers, if the registers that represent the whole string is accessed then only the first four characters will appear. To access the whole string over Modbus use the registers that map to the parameter number of the whole array plus one, in this example **0162** (register **00851**). A multiple read or write of registers will then provide access to the whole string.

## String Array Example

A string array parameter called **My String Array** has 2 elements of string length 5 characters (plus the null terminator) each. In this example the parameter number of the whole array is 0175.

If the values of the array elements are "12345" and "abc":

Parameter Number	Represents	Register Number	Register Value	
			hi-byte	lo-byte
0175	whole array ["12345", "abc"]	00877	'2'	'1'
		00878	'4'	'3'
0176	1 <sup>st</sup> element "12345"	00879	'2'	'1'
		00880	'4'	'3'
0177	fragment "1234"	00881	'2'	'1'
		00882	'4'	'3'
0178	fragment "5"	00883	<i>null</i>	'5'
		00884	?	?
0179	2 <sup>nd</sup> element "abc"	00885	'b'	'a'
		00886	<i>null</i>	'c'
0180	fragment "abc"	00887	'b'	'a'
		00888	<i>null</i>	'c'
0181	fragment ""	00889	?	?
		00890	?	?

To access the first element of the array over Modbus then parameter number **0177** (register **00881**) would be used. To access the second element then parameter number **0180** (register **00887**) would be used.

## Appendix C – Data Types

The AC30 parameter data type and size and number of registers used for process data mapping are given in the below.

Note for acyclic access all parameters map to two registers regardless of data type.

AC30 Parameter			Process Data
Data Type	Description	Bytes	No of registers
BOOL	Boolean	1	1
SINT	Short integer	1	1
INT	Integer	2	1
DINT	Double integer	4	2
USINT	Unsigned short integer	1	1
UINT	Unsigned integer	2	1
UDINT	Unsigned double integer	4	2
REAL	Floating point	4	2
TIME	Duration	4	2
DATE	Date	4	2
TIME_OF_DAY	Time of day	4	2
DATE_AND_TIME	Date and time of day	4	2
STRING	String	<i>n</i>	<i>not permitted</i>
BYTE	Bit string length 8	1	1
WORD	Bit string length 16	2	1
DWORD	Bit string length 32	4	2

# Parker Worldwide

**AE – UAE, Dubai**  
Tel: +971 4 8127100  
parker.me@parker.com

**AR – Argentina, Buenos Aires**  
Tel: +54 3327 44 4129

**AT – Austria, Wiener Neustadt**  
Tel: +43 (0)2622 23501-0  
parker.austria@parker.com

**AT – Eastern Europe, Wiener Neustadt**  
Tel: +43 (0)2622 23501 900  
parker.eastereurope@parker.com

**AU – Australia, Castle Hill**  
Tel: +61 (0)2-9634 7777

**AZ – Azerbaijan, Baku**  
Tel: +994 50 2233 458  
parker.azerbaijan@parker.com

**BE/LU – Belgium, Nivelles**  
Tel: +32 (0)67 280 900  
parker.belgium@parker.com

**BR – Brazil, Cachoeirinha RS**  
Tel: +55 51 3470 9144

**BY – Belarus, Minsk**  
Tel: +375 17 209 9399  
parker.belarus@parker.com

**CA – Canada, Milton, Ontario**  
Tel: +1 905 693 3000

**CH – Switzerland, Etoy**  
Tel: +41 (0)21 821 87 00  
parker.switzerland@parker.com

**CL – Chile, Santiago**  
Tel: +56 2 623 1216

**CN – China, Shanghai**  
Tel: +86 21 2899 5000

**CZ – Czech Republic, Klecany**  
Tel: +420 284 083 111  
parker.czechrepublic@parker.com

**DE – Germany, Kaarst**  
Tel: +49 (0)2131 4016 0  
parker.germany@parker.com

**DK – Denmark, Ballerup**  
Tel: +45 43 56 04 00  
parker.denmark@parker.com

**ES – Spain, Madrid**  
Tel: +34 902 330 001  
parker.spain@parker.com

**FI – Finland, Vantaa**  
Tel: +358 (0)20 753 2500  
parker.finland@parker.com

**FR – France, Contamine s/Arve**  
Tel: +33 (0)4 50 25 80 25  
parker.france@parker.com

**GR – Greece, Athens**  
Tel: +30 210 933 6450  
parker.greece@parker.com

**HK – Hong Kong**  
Tel: +852 2428 8008

**HU – Hungary, Budapest**  
Tel: +36 1 220 4155  
parker.hungary@parker.com

**IE – Ireland, Dublin**  
Tel: +353 (0)1 466 6370  
parker.ireland@parker.com

**IN – India, Mumbai**  
Tel: +91 22 6513 7081-85

**IT – Italy, Corsico (MI)**  
Tel: +39 02 45 19 21  
parker.italy@parker.com

**JP – Japan, Tokyo**  
Tel: +81 (0)3 6408 3901

**KR – South Korea, Seoul**  
Tel: +82 2 559 0400

**KZ – Kazakhstan, Almaty**  
Tel: +7 7272 505 800  
parker.eastereurope@parker.com

**MX – Mexico, Apodaca**  
Tel: +52 81 8156 6000

**MY – Malaysia, Shah Alam**  
Tel: +60 3 7849 0800

**NL – The Netherlands, Oldenzaal**  
Tel: +31 (0)541 585 000  
parker.nl@parker.com

**NO – Norway, Asker**  
Tel: +47 66 75 34 00  
parker.norway@parker.com

**NZ – New Zealand, Mt Wellington**  
Tel: +64 9 574 1744

**PL – Poland, Warsaw**  
Tel: +48 (0)22 573 24 00  
parker.poland@parker.com

**PT – Portugal, Leca da Palmeira**  
Tel: +351 22 999 7360  
parker.portugal@parker.com

**RO – Romania, Bucharest**  
Tel: +40 21 252 1382  
parker.romania@parker.com

**RU – Russia, Moscow**  
Tel: +7 495 645-2156  
parker.russia@parker.com

**SE – Sweden, Spånga**  
Tel: +46 (0)8 59 79 50 00  
parker.sweden@parker.com

**SG – Singapore**  
Tel: +65 6887 6300

**SK – Slovakia, Banská Bystrica**  
Tel: +421 484 162 252  
parker.slovakia@parker.com

**SL – Slovenia, Novo Mesto**  
Tel: +386 7 337 6650  
parker.slovenia@parker.com

**TH – Thailand, Bangkok**  
Tel: +662 717 8140

**TR – Turkey, Istanbul**  
Tel: +90 216 4997081  
parker.turkey@parker.com

**TW – Taiwan, Taipei**  
Tel: +886 2 2298 8987

**UA – Ukraine, Kiev**  
Tel: +380 44 494 2731  
parker.ukraine@parker.com

**UK – United Kingdom, Warwick**  
Tel: +44 (0)1926 317 878  
parker.uk@parker.com

**US – USA, Cleveland**  
Tel: +1 216 896 3000

**VE – Venezuela, Caracas**  
Tel: +58 212 238 5422

**ZA – South Africa, Kempton Park**  
Tel: +27 (0)11 961 0700  
parker.southafrica@parker.com

**European Product Information Centre**

**Free phone: 00 800 27 27 5374**

**(from AT, BE, CH, CZ, DE, EE, ES, FI, FR, IE, IL, IS, IT, LU, MT, NL, NO, PT, SE, SK, UK)**

© 2012 Parker Hannifin Corporation. All rights reserved.

**Parker Hannifin Manufacturing Limited,  
Automation Group, SSD Drives Europe,**  
New Courtwick Lane, Littlehampton,  
West Sussex BN17 7RZ  
United Kingdom  
Tel: +44(0)1903 737000  
Fax: +44(0)1903 737100  
[www.parker.com/ssd](http://www.parker.com/ssd)



\* H A 5 0 1 9 3 7 0 0 1 0 1 \*